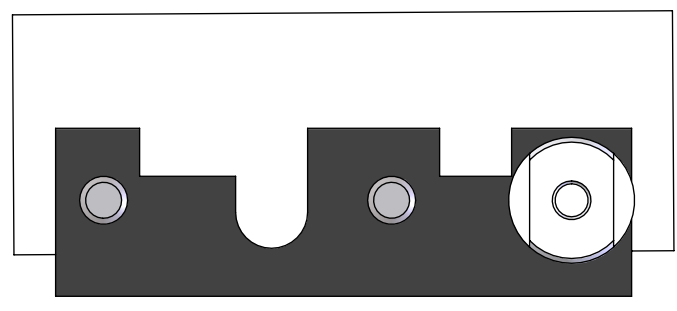
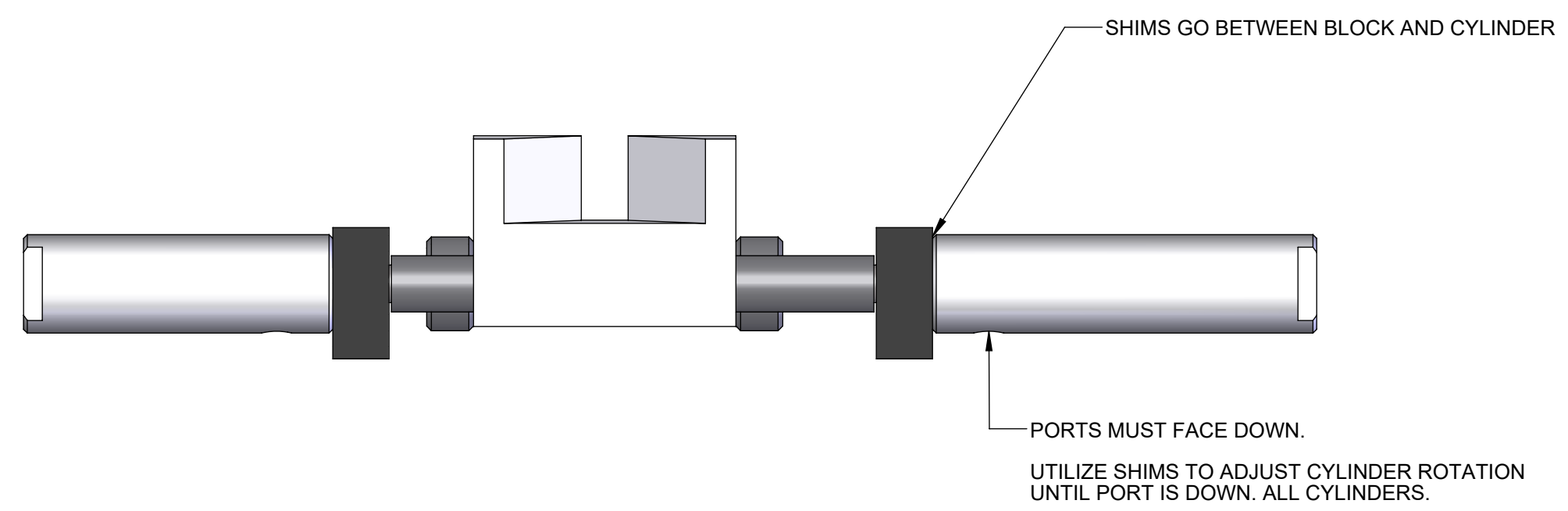
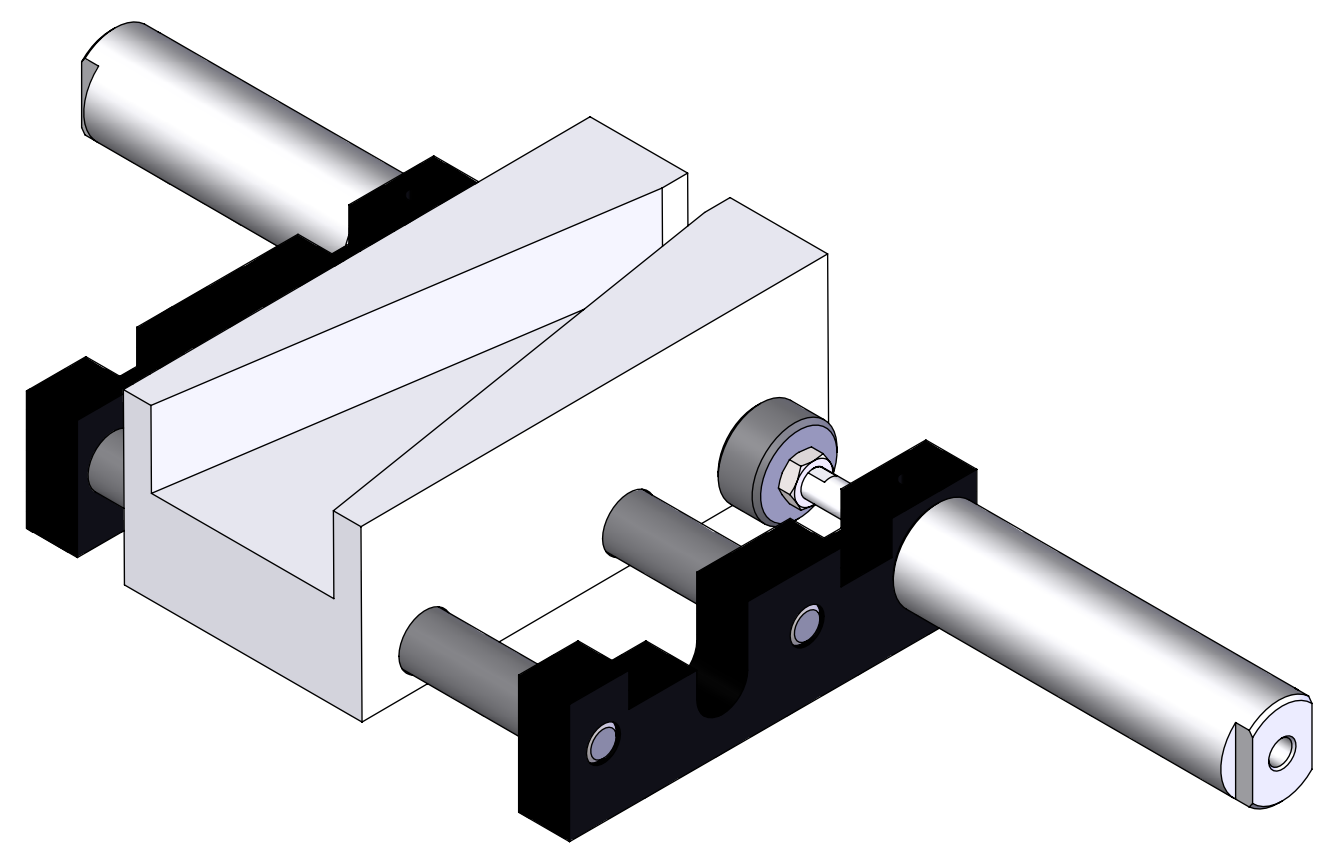
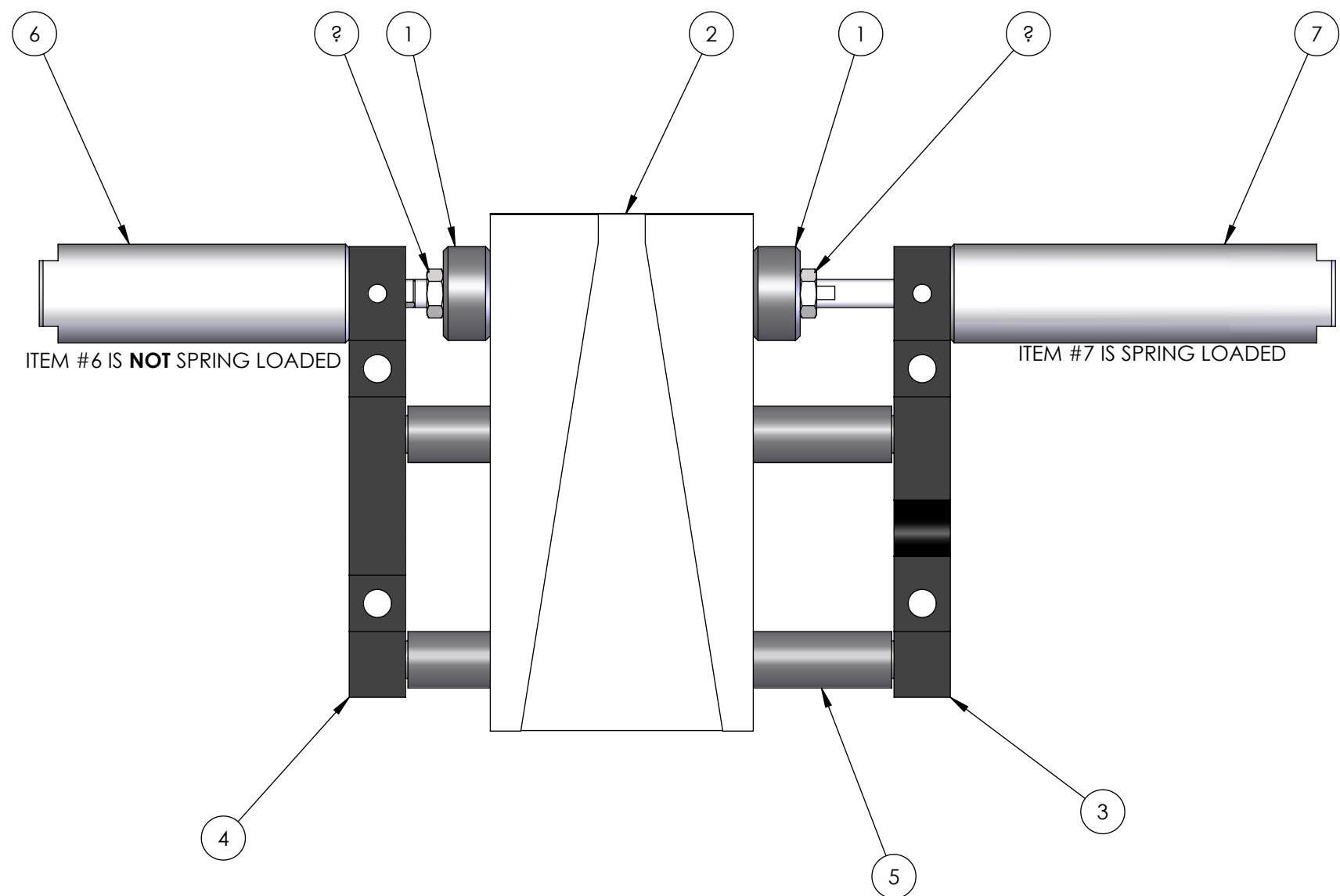


ITEM NO.	REV	PART NUMBER	QTY.	DESCRIPTION
1	-	01615	2	LINE DIVIDER SHIFT ROD END
2	A	01557	1	LINE DIVIDER AUX SHIFT BLOCK
3	-	04384	1	LINE DIVDER AUX SHIFT POINT CYLINDER MOUNT - INSIDE
4	C	01544	1	LINE DIVIDER AUX SHIFT POINT CYLINDER MOUNT
5	-	00907	2	LINE DIVIDER AUX SHIFT ROD
6	-	SDR-20-1	1	1 1/4" BORE STAINLESS STEEL CYLINDER - SDR-20 - STROKE 1" - CLIPPARD
7	-	SBR-20-1	1	1 1/4" Bore Stainless Steel Cylinder - SBR-20 - Stroke 1" - CLIPPARD
8	-	94846A515	2	STEEL THIN HEX NUT GRADE 5, ZINC-PLATED, 3/8"-24



<p>1930 HUNTER LOOP RD. MONTGOMERY, AL 36108 ph: 334.269.6970 fx: 334.269.6977 www.T-TEK.com</p>	UNLESS OTHERWISE SPECIFIED:		NAME	DATE	TITLE: LINE DIVIDER STANDARD AUX SHIFT POINT ASSEMBLY-LH	
	DIMENSIONS ARE IN INCHES TOLERANCES: FRACTIONAL $\pm 1/32$ ANGULAR: MACH ± 0.05 BEND \pm TWO PLACE DECIMAL ± 0.01 THREE PLACE DECIMAL ± 0.002		DRAWN	JPL		07SEPT07
	STATUS		PROPRIETARY AND CONFIDENTIAL THE INFORMATION CONTAINED IN THIS DRAWING IS THE SOLE PROPERTY OF T-TEK MATERIAL HANDLING INC. ANY REPRODUCTION IN PART OR AS A WHOLE WITHOUT THE WRITTEN PERMISSION OF T-TEK MATERIAL HANDLING INC. IS PROHIBITED.			REV DWG. NO. - 01556LH
P-0036		DO NOT SCALE DRAWING		WEIGHT: 9.88		SHEET 1 OF 1